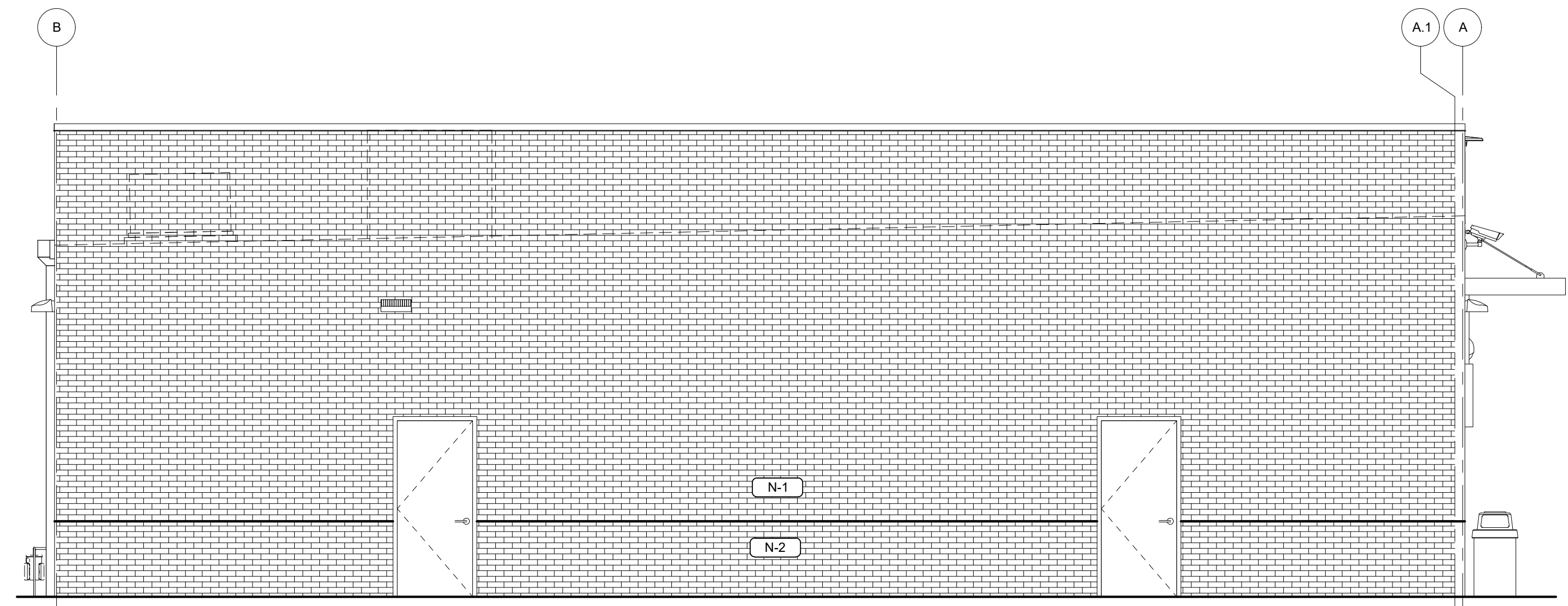
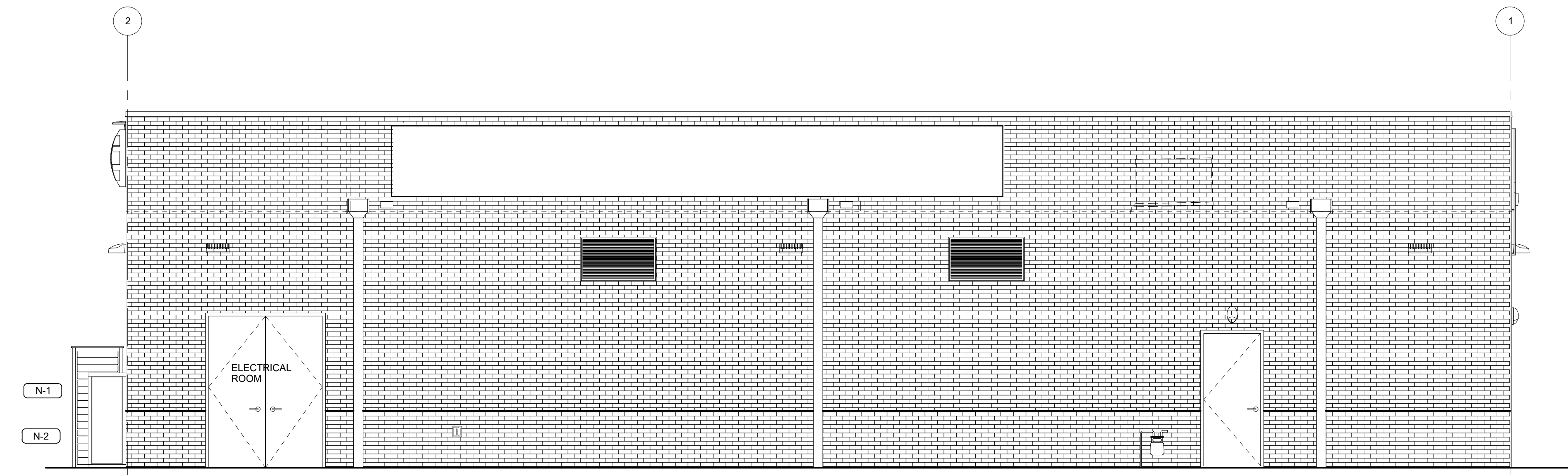


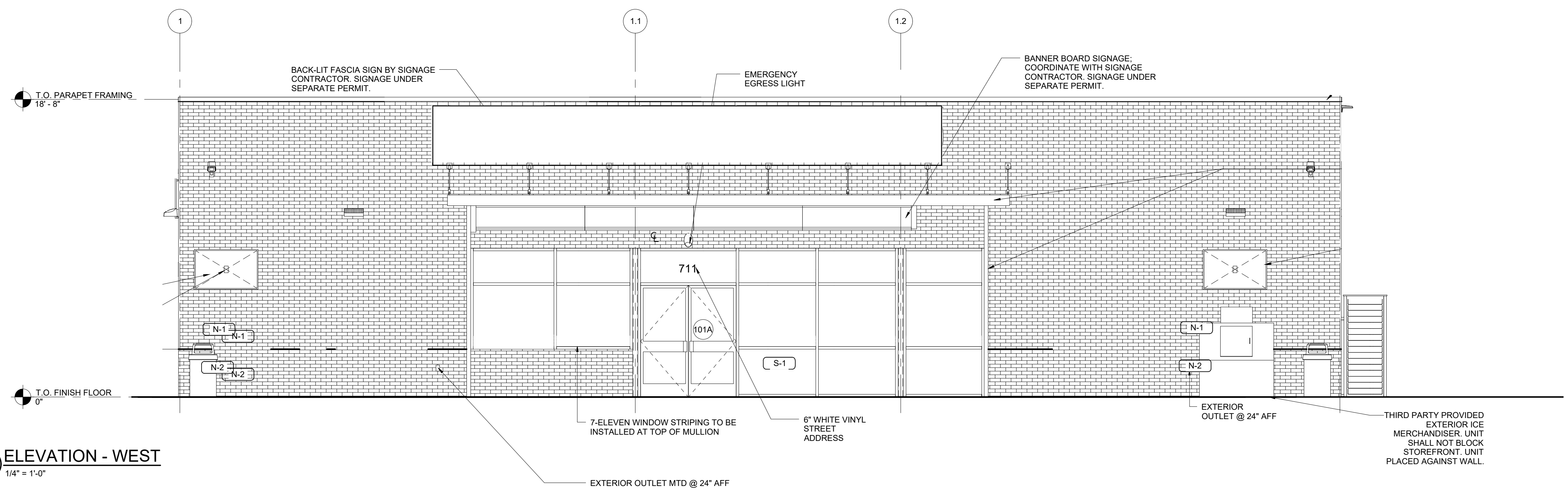
3 ELEVATION - SOUTH
1/4" = 1'-0"



4 ELEVATION - NORTH
1/4" = 1'-0"



2 ELEVATION - EAST
1/4" = 1'-0"



1 ELEVATION - WEST
1/4" = 1'-0"

PROPOSED CONVENIENCE STORE & GAS STATION
AT
15701 ROSCOE BLVD
NORTH HILLS, CA 91343

A-2.0

STORE ELEVATIONS