



BRIGHTSTAR
S C H O O L S



BRIGHT STAR SCHOOLS

2018 IMPACT REPORT

OUR SCHOOLS



WEST ADAMS/BALDWIN VILLAGE SCHOOLS

- 1. NEW IN 2018!** Stella Elementary Charter Academy
- 2. BRAND NEW PERMANENT FACILITY IN 2019!** Stella Middle Charter Academy
- 3.** Bright Star Secondary Charter Academy

KOREATOWN

- 4. OPENS FALL 2019!** Rise Kohyang Elementary School
- 5.** Rise Kohyang Middle School
- 6.** Rise Kohyang High School

SAN FERNANDO VALLEY

- 7.** Valor Academy Elementary School
- 8.** Valor Academy Middle School
- 9. BRAND NEW PERMANENT FACILITY IN 2018!** Valor Academy High School

A NOTE FROM OUR DIRECTOR



SINCE OUR FOUNDING IN 2003, BRIGHT STAR SCHOOLS HAS ENVISIONED A MORE EQUITABLE TOMORROW.

A tomorrow filled with possibilities for every student who walks through our doors, no matter their circumstances.

A tomorrow where parents know their children are getting an excellent education and are on the path to higher education and career success.

A tomorrow where teachers feel empowered and supported to excel in their craft and to fuel their lessons with endless passion.

At **Bright Star Schools**, we know where we're going and we need your support to get there. We invite you to learn more about how we're realizing our vision and to support our critical work on behalf of students and communities.

A handwritten signature in black ink, appearing to read 'Hrag Hamalian'. The signature is stylized with long, sweeping lines.

Hrag Hamalian
Executive Director of Bright Star Schools



ABOUT BRIGHT STAR SCHOOLS

AT BRIGHT STAR SCHOOLS, OUR MISSION IS TO PROVIDE HOLISTIC, INCLUSIVE SUPPORT FOR ALL STUDENTS TO ACHIEVE ACADEMIC EXCELLENCE AND GROW THEIR UNIQUE TALENTS SO THAT THEY FIND JOY AND FULFILLMENT IN HIGHER EDUCATION, CAREER, AND LIFE.

WHAT GUIDES US

BRIGHT STAR'S CORE VALUES

INTEGRIDAD

means we need to be the best versions of ourselves, to speak our own truth, and to advocate for those whose voices are not heard.

고향 (KOHYANG)

means hometown and encourages us to build meaningful connections and strong community ties, because our hometowns are integral to our identities.

UBUNTU

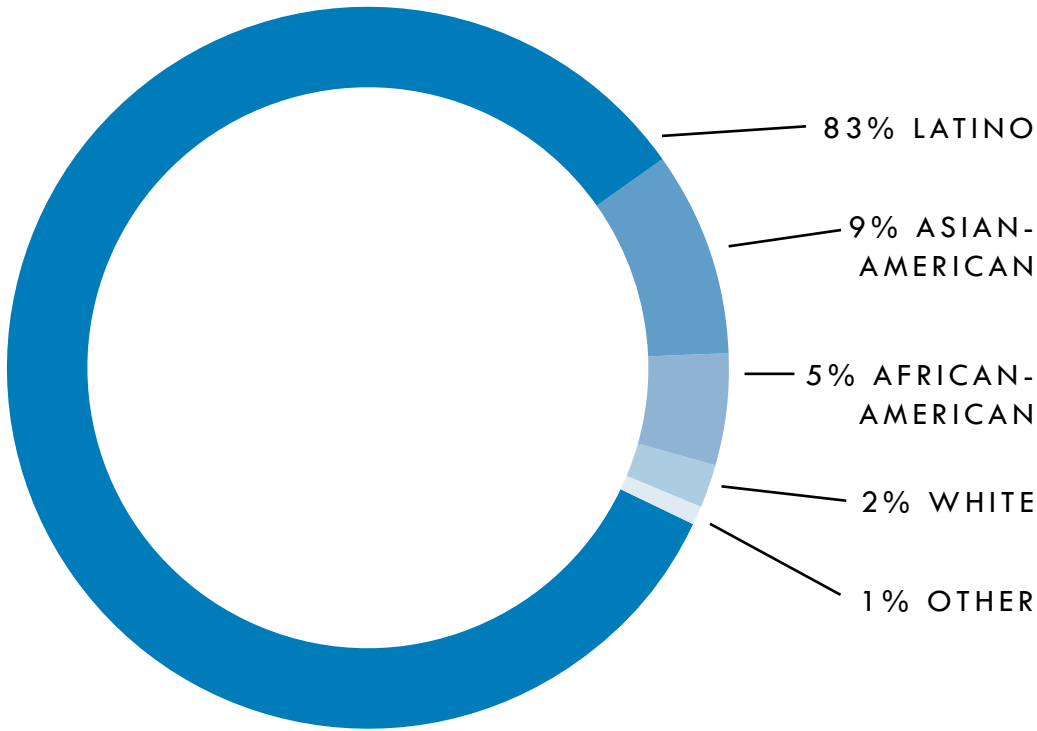
means that our humanity is shared, that we value kindness, and that we support one another to become the people we strive to be.

GROWTH

means having a mindset that allows us to achieve excellence and gain fulfillment through our pursuit of learning and development.



SCHOOL DEMOGRAPHICS



3,000
STUDENTS

ACROSS
OUR SCHOOLS

8
SCHOOLS

THROUGHOUT
LOS ANGELES

3
COMMUNITIES

WEST ADAMS,
KOREATOWN,
AND THE
SAN FERNANDO
VALLEY

92%

ARE ELIGIBLE FOR
FREE REDUCED
LUNCH

19%

ARE ENGLISH
LEARNERS

11%

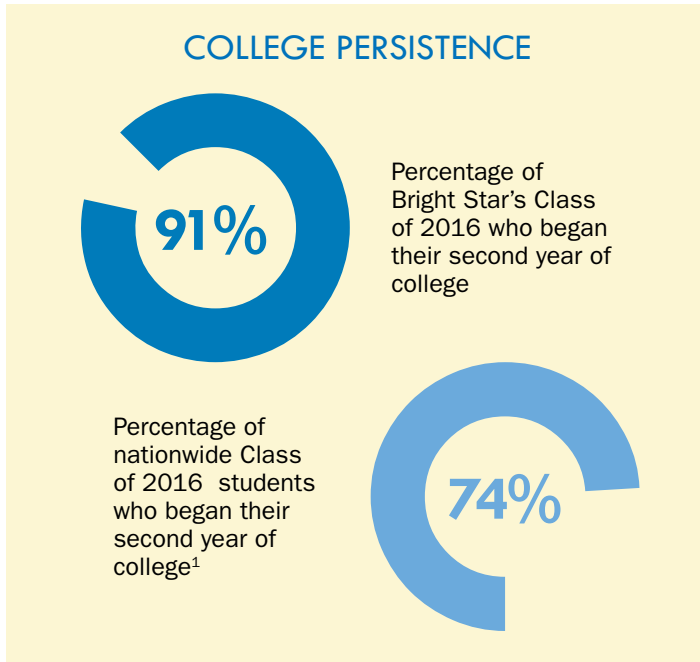
ARE PART OF
THE INCLUSIVE
(SPECIAL)
EDUCATION
POPULATION



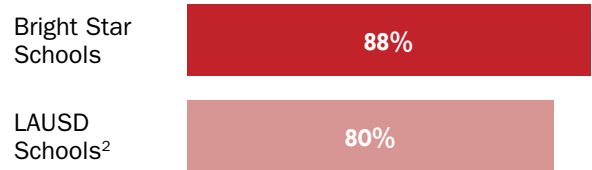
BRIGHT STAR CREATES LEADERS

ALUMNI SUCCESS

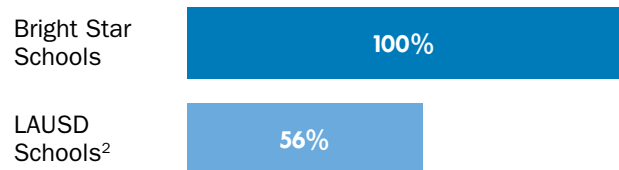
Through Bright Star's Alumni Support and College Success Program, we help all students identify a personally meaningful and financially viable post-graduate pathway, and provide **up to six years of individualized support** for our high school graduates.



HIGH SCHOOL GRADUATION RATE



GRADUATES WHO MET ADMISSION REQUIREMENTS FOR UC AND CAL STATE SCHOOLS



ALUMNI SPOTLIGHT: IVAN LAMAS-SANCHEZ



After graduating from Bright Star in 2010, Ivan Lamas-Sanchez went on to earn his bachelor's and master's degrees. The first in his family to graduate from high school and college, Ivan has committed his career to education. **His goal is to increase the number of students of color, first-generation students, women, and LGBTQ students in competitive universities.**

In 2018, Ivan was awarded the prestigious Fulbright English Teaching Assistantship, and travels to Brazil in 2019 to teach English to college students.

IVAN LAMAS-SANCHEZ

Bright Star Secondary Charter Academy,
Class of 2010
BA, UCSB, Class of 2014
MA, University of Maryland, Class of 2018
Fulbright English Teaching Assistantship 2019

ACADEMIC ACHIEVEMENT

Academically, our students—the majority of whom are growing up in culturally-rich but under-resourced communities in Los Angeles—outperform their peers in district schools.

MIDDLE AND HIGH SCHOOL STUDENTS (GRADES 5—11) MEETING OR EXCEEDING STANDARDS³

	English Language Arts	Math
BRIGHT STAR SCHOOLS	46 %	38 %
LAUSD SCHOOLS	42 %	28 %
STATEWIDE RESULTS	50 %	36 %

WHOLE CHILD DEVELOPMENT

THE CONNECTIONS PROGRAM

From transitional-kindergarten through higher education, Bright Star stands side-by-side with our students and families. We integrate social-emotional learning, provide positive behavior intervention support, and embrace restorative justice practices.

BEYOND-THE-CLASSROOM OPPORTUNITIES

Through “Life Experience Lessons” and “College Experience Lessons” our students travel across the country to see colleges; explore national parks; and visit new cities.

Through partnerships with community organizations like Harvard-Westlake School and private sector businesses like Boston Consulting Group Digital Ventures, our students access enriching experiences, internships, and mentorships.

COUNSELORS FOR STUDENTS

STUDENT TO COUNSELOR AVERAGES⁴

133:1

**BRIGHT STAR
RATIO**

482:1

NATIONWIDE

760:1

IN CALIFORNIA

1. National Student Clearinghouse: “Persistence & Retention - 2018.” <https://nscresearchcenter.org/snapshotreport33-first-year-persistence-and-retention/>

2. 2017 LAUSD results, retrieved from: <http://laschoolreport.com/las-graduation-rate-will-now-be-reported-in-a-second-way-to-reveal-how-many-students-are-actually-eligible-for-state-universities/>

3. State standardized test results (2018) from California Assessment of Student Progress and Performance (CAASPP): <https://caaspp.cde.ca.gov/sb2018/default>

4. National Association for College Admission Counseling (NACAC) and the American School Counselor Association (ASCA). “State-by-state student-to-counselor ratio report.” Retrieved from <https://www.nacacnet.org/globalassets/documents/publications/research/state-by-state-ratio-report.pdf>

BRIGHT STAR EMPOWERS TEACHERS

TEACHER DEVELOPMENT

At Bright Star, we provide teachers with over 260 hours of differentiated professional development annually, offer an in-house teacher induction program that is free of cost, and deliver instructional coaching, evaluation and teacher leadership and mentorship opportunities to support our teachers to become experts in their craft.

TEACHER INNOVATION LAB

Through our Teacher Innovation Lab—a group of educators who meet with executive leaders monthly—we empower educators to raise and address key issues at Bright Star so we can rapidly evolve our practices to meet educators’ needs.

TEACHER HEALTH AND WELLNESS

To make teaching a sustainable, lifelong profession, we offer staff fitness classes during work hours, stock healthy snacks, offer nursing pods for new moms, and provide childcare subsidies and additional paid family leave.

TEACHER SCHOLARSHIPS

Yogeshwari Patel is a high-performing Bright Star teacher and recipient of Bright Star’s National Board Certification scholarship. In 2018, when 100% of Yogi’s Valor Academy High School juniors passed their AP Biology exam, she wasn’t surprised.

“AT BRIGHT STAR THERE IS
SUPPORT FOR EVERYONE.
TRUST IS EVERYWHERE AND
BUILDING RELATIONSHIPS
IS THE MOST IMPORTANT
THING.”



YOGESHWARI PATEL

Science Teacher
Valor Academy High School



“ THE BRIGHT STAR WELLNESS PROGRAM AND COACHES ARE EMPOWERING ME TO CREATE A BETTER ME, TO BETTER SERVE MY STUDENTS, STAFF, AND SCHOOL COMMUNITY AS WELL AS MY OWN FAMILY! ”

SEAN R. BURGESS

Music Teacher and Performing Arts Director at
Bright Star Secondary Charter Academy



“BRIGHT STAR CREATES LEADERS



**WHO WANT
TO CHANGE
THINGS AND
WHO DON'T
CONFORM TO
THE STATUS
QUO.”**

MELISSA ESPARZA

Valor Academy High School,
Class of 2018

Kayne Scholar, University of California,
Berkeley, Class of 2022 (anticipated)

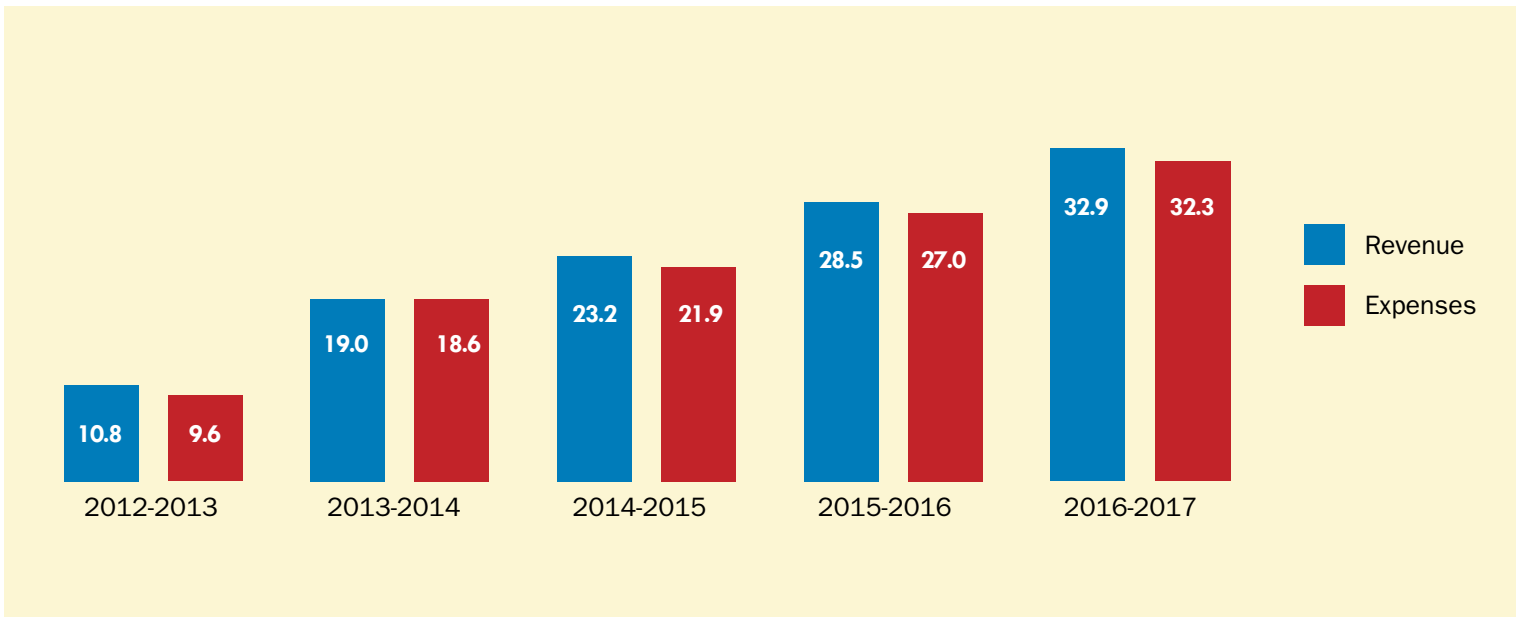
At Berkeley, Melissa is pursuing a triple major in ethnic studies, legal studies, and political science, and plans to go to law school to improve the immigration and healthcare systems for underrepresented people.

ORGANIZATIONAL SUSTAINABILITY AND GROWTH

FINANCIALS

At Bright Star, we believe that realizing our vision for our students requires organizational equity, efficiency, and sustainability. We practice equitable school funding across our network, while giving schools substantial freedom to budget according to their goals and student needs. As much as possible, we remove operational burdens from our school staff through home office support so that they can focus on instruction.

OPERATING REVENUE AND EXPENDITURES (IN MILLIONS)



“AT BRIGHT STAR, WE PRIORITIZE STRONG FISCAL HEALTH TO ENSURE OUR SCHOOLS ARE SUSTAINABLE FOR DECADES TO COME.”

SAMAN BRAVO-KARIMI

Chief Business Officer

SUPPORT OUR SCHOOLS

The support of partners and champions like you is crucial to our success. For Bright Star to provide access and opportunities for our students to see and realize endless possibilities for their lives, we rely on your partnership.

PUBLIC FUNDING: 2017 PER-PUPIL SPENDING BY STATE ADJUSTED FOR REGIONAL COSTS ⁵
Vermont (highest): \$20,795
New York: \$18,665
Massachusetts: \$14,569
National Average: \$12,526
Mississippi: \$9,885
California: \$9,417
Utah (lowest): \$7,207



GROWING OUR IMPACT THROUGH 2025

With your support and partnership, Bright Star will expand our reach.

NOW		BY 2025
3,000 STUDENTS		4,500 STUDENTS
2 PERMANENT FACILITIES		8 PERMANENT FACILITIES
138 TEACHERS		204 TEACHERS
40 LIFE EXPERIENCE LESSONS AND ELEMENTARY SCHOOL FIELD TRIPS		107 LIFE EXPERIENCE LESSONS AND ELEMENTARY SCHOOL FIELD TRIPS
530 ALUMNI SUPPORTED TO COMPLETE HIGHER EDUCATION PATHWAY		1,600+ ALUMNI SUPPORTED TO COMPLETE HIGHER EDUCATION PATHWAY

5. Education Week: "Quality Counts 2018: Finance." Retrieved from: <https://www.edweek.org/ew/collections/quality-counts-2018-state-finance/map-per-pupil-spending-state-by-state.html>.

THANK YOU TO ALL OF OUR CHAMPIONS AND SUPPORTERS

BRIGHT STAR SCHOOLS BOARD OF DIRECTORS

Larry Klein ◊

Chairman of the Board
Teacher, Harvard-Westlake School

James McGrath *

Board Secretary
Founding Director, Intellectual Virtues Academy

Kimako Desvignes ◊

Bright Star Schools Parent

Greg Gonzalez *

Director of Financial Aid and Teacher,
Harvard-Westlake School

Stephen Green §

Chief Program Officer, Noodle Partners

George Leftwich ◊

Business Consultant & Coach

Lois Levy *

Retired Assistant Head of School,
Center for Early Education

Andrew Murr ◊

Adjunct Professor, Center for Management
Communication, USC
Retired Former Bureau Chief, Newsweek

Esther Perez *

Executive Director and Principal, Valiente
College Preparatory Charter School



WHO ENSURE WE'RE #BRIGHTSTARSTRONG!

Julie Robles *

Bright Star Schools Parent

David Valentine \$◇

Chief Operating Officer, The Center for Independent Charter Schools

Andrew Wang \$

Director of Business Development, SolarReserve

Louisa Wee \$

Vice President, Marketing Strategy & Analysis and Programmatic Media Buying, Netflix

Elizabeth Yeo *

Bright Star Schools Parent

BRIGHT STAR EDUCATION GROUP BOARD OF DIRECTORS

Andrew Murr ◇

Chairman of the Board
Adjunct Professor, Center for Management Communication, USC
Retired Former Bureau Chief, Newsweek

Dean Indot

Senior Vice President & Senior Relationship Manager, Torrey Pines Bank

Larry Klein

Teacher, Harvard-Westlake School

Scott Layfield

Attorney, DLA Piper Global Law Firm

James Min

Managing Partner, Telos Advisors

Marc Mitchell

Founder, Dominion Media Group

Michael Solomon

CFA, Partner, Leonard Green & Partners, L.P.

BRIGHT STAR CHAMPIONS

American Business Bank
Charter School Growth Fund
Gerardo Diaz, Jr. Memorial Scholarships
Amy Forbes and Andrew Murr
The Garcia Family Fund
The Garris Family
Gibson Dunn
Great Public Schools Now
L.I.F.T. Foundation
Frank McHugh-O'Donovan Foundation
Marc Mitchell
Netflix
Orrick
Procopio
Bill and Dina Ruch Family Foundation
SolarReserve
Stifel
Sullivan & Cromwell LLP
William E.B. Siart Family Fund
The Thacher Family Foundation
David and Deborah Shine Valentine
Ms. Louisa Wee & Mr. Matt Thompson
Kimberlina Whettam & Associates

★ Academic Committee

\$ Business/Finance Committee

◇ Governance Committee



BRIGHTSTAR
S C H O O L S

**600 S. Lafayette Park Place, Suite 302
Los Angeles, California 90057**

**www.brightstarschools.org
[@brightstarschools](https://www.instagram.com/brightstarschools)**