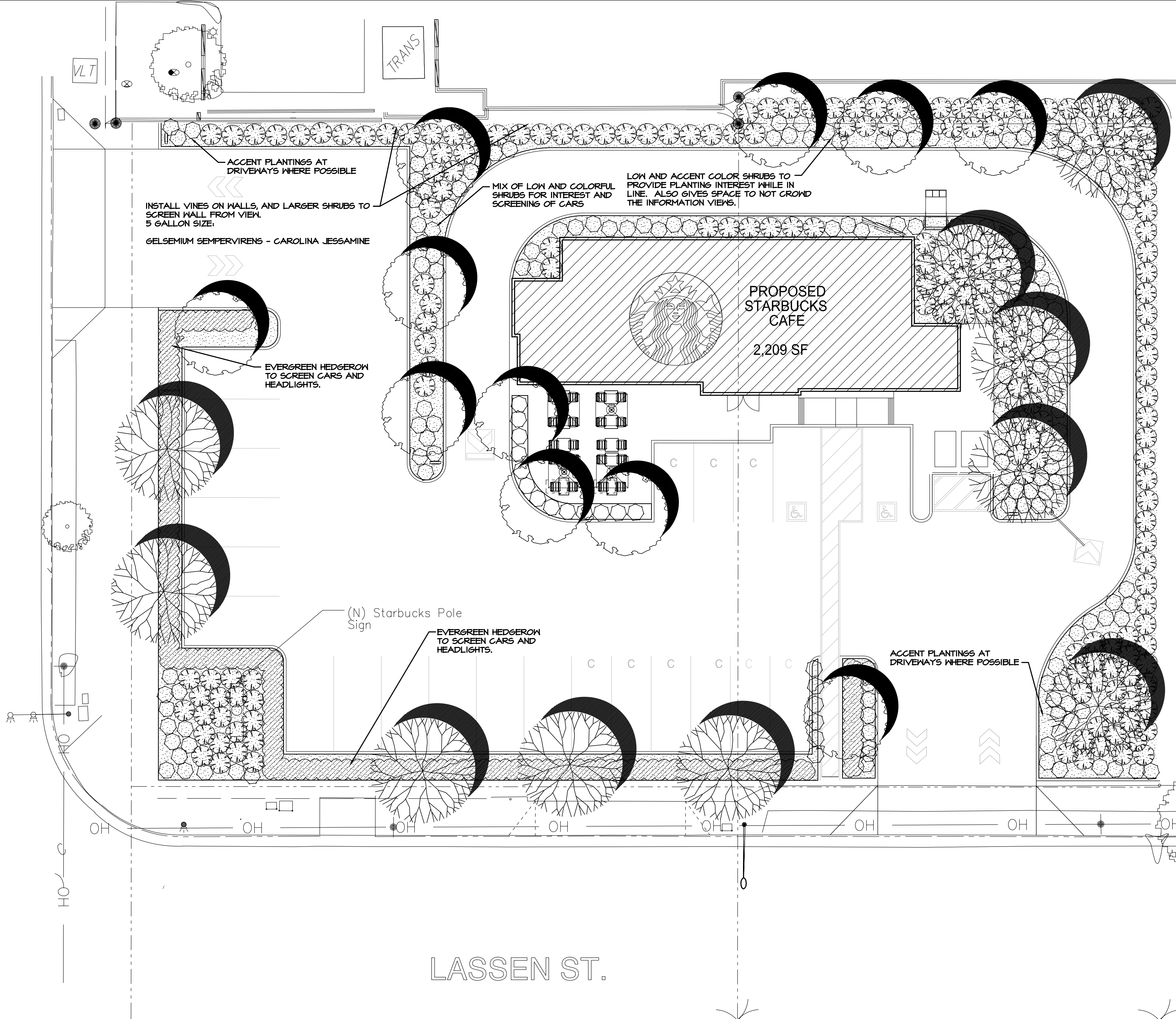


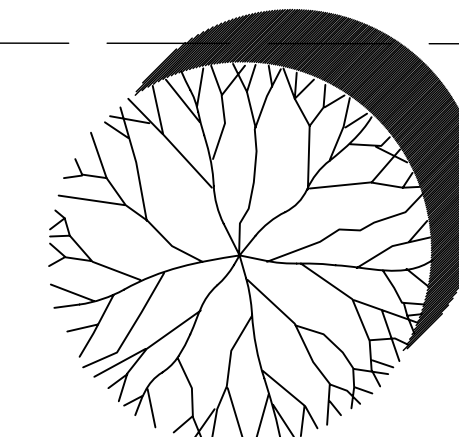
BALBOA BLVD.



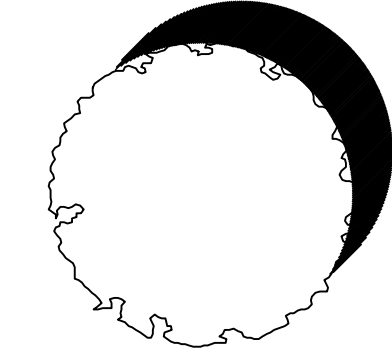
LANDSCAPE LEGEND:

THE FOLLOWING PLANT MATERIAL ARE SUGGESTED FOR THIS PROJECT. PLANTINGS MAY INCLUDE, BUT NOT BE LIMITED TO THE FOLLOWING PLANT MATERIALS.

TREES:

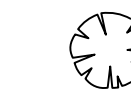


MEDIUM SIZED EVERGREEN TREES:
RHUS LANCEA - AFRICAN SUMAC
EVERGREEN TREE FOR YEAR ROUND GREEN TREE MASSING.
24" BOX



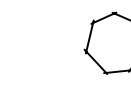
SMALL SIZED FLOWERING TREES:
RHAPHIOLEPIS INDICA 'MAJESTIC BEAUTY'
EASY TO MAINTAIN FLOWERING DECIDUOUS TREE FOR YEAR ROUND GREEN TREE MASSING EFFECT AND DARK PINK FLOWERS.
24" BOX

SHRUBS:



MEDIUM SIZED BACKGROUND SHRUB FOR SCREENING AND BACKING UP FOREGROUND ACCENT SHRUBS. 5 GALLON SIZE.

AGAVE ATTENUATA - AGAVE
CALLISTEMON VIMINALIS 'LITTLE JOHN' - DWARF BOTTLE BRUSH
LANTANA 'NEW GOLD' - NEW GOLD LANTANA
LIGUSTRUM JAPONICUM 'TEXANUM' - PRIVET
NANDINA DOMESTICA 'COMPACTA' - DWARF HEAVENLY BAMBOO
SALVIA GREGGII - AUTUMN SAGE



SMALL SIZED, OR LOW GROWING SHRUBS FOR ACCENT COLOR, OR LOW PLANTINGS AROUND PAVING. 5 OR 1 GALLON SIZE

CAREX TUMULICOLA - BERKELEY SEDGE
CARISSA MACROCARPA 'GREEN CARPET' - DWARF NATAL PLUM
DIANELLA TASMANICA SPP. - FLAX LILY
HEMEROCALLIS HYBRID 'STELLA DEL ORO' - DWARF DAYLILY
HESPERALOE PARVIFLORA 'BRAKELIGHTS' - RED YUCCA
MYOPORUM PARVIFOLIA 'PUTAH CREEK' - PROSTATE MYOPORUM



HEDGERON PLANTINGS OF DENSE SMALL-LEAFED EVERGREEN SHRUBS THAT WILL TAKE HEDGE CUTTING AND SCREEN CAR LIGHTS. 5 GALLON SIZE AT ABOUT 36" SPACING.

ILEX VOMITORIA - YAUPON

IRRIGATION:

IRRIGATION SYSTEM SHALL BE CONTROLLED BY A "SMART" CONTROLLER CAPABLE OF MAKING ADJUSTMENTS TO THE SYSTEM TIMING BASED ON CHANGES IN THE WEATHER. THE SYSTEM SHALL ALSO HAVE A FLOW SENSOR FOR DIAGNOSING UNUSUAL HIGH FLOWS AS MAY OCCUR DURING A BREAK. WORKING IN TANDEM WITH THE FLOW SENSOR WILL BE A MASTER VALVE CAPABLE OF SHUTTING DOWN THE SYSTEM IN THE CASE OF AN UNUSUAL HIGH FLOW.

EMISSION DEVICES WILL CONSIST OF DRIP IRRIGATION EMITTERS, MICROSPRAYS, OR DRIP TUBES DEPENDING ON THE SITUATION. THESE DEVICES WILL PROVIDE LOW FLOWS AND PREVENT RUNOFF ONTO THE PAVING, AS WELL AS EFFICIENTLY USE THE WATER AT THE PLANT LEVEL.

A 3" DEEP LAYER OF MULCH SHALL COVER ALL PLANTING BEDS TO REDUCE WEED GROWTH AND AID IN WATER RETENTION.

STARBUCKS
BALBOA BLVD. & LASSEN ST.
9900 BALBOA BLVD.
NORTHRIDGE, CA 91770



NORTH



SCALE: 1"=10'

TCLA, Inc.
LANDSCAPE ARCHITECTURE - ENVIRONMENTAL DESIGN

CORPORATE OFFICE: JOSEPH A. VARONIN A.S.L.A. CA#1737
 27985 SMYTH DRIVE, VALENCIA, CALIFORNIA 91355
 (PH) 661-702-1011 (FX) 661-702-0293

ORANGE COUNTY OFFICE:
 22792 CENTRE DRIVE, #107, LAKE FOREST, CA 92630
 (PH) 949-250-1615 (FX) 949-250-1801